



REVISION FOR POST MID TERM EXAMINATION
2022 – 2023

NAME :		DATE :
CLASS : IV SEC : ___ ROLL NO:___	SUBJECT : EVS	MARKS : /20 TIME : 1 HOUR

General Instructions:

- This question paper consists of 3 sections and 5 pages.
- Marks are indicated against each question.
- All questions are compulsory.

SECTION - A

I. Choose and circle the correct answer.

(4 marks)

1. Trees like teak and shisham _____ .
a) are found in hilly areas b) are fruit trees c) are non-flowering trees d) provide us wood
2. Carrot, radish and sweet potato are examples of _____ .
a) fibrous roots b) storage roots c) flowering trees d) underground modified stems
3. The most expensive flower that is used as a spice is _____ .
a) jasmine b) marigold c) clove d) saffron
4. The _____ protects the flower when it is a bud.
a) seed b) carpel c) petal d) sepal
5. Monkeys can live on land but do not belong to the terrestrial animal group because they
a) jump on the trees b) cannot fly b) cannot walk d) mostly live on the trees
6. _____ live in underground colonies.
a) rabbits b) rats c) termites d) earthworms
7. The place where beehives of honeybees are kept is called _____ .
a) apiculture b) pollination c) agriculture d) apiary
8. _____ is the tool of defense for honeybees.
a) Leg b) Antennae c) Thorax d) Stinger

II. Match the following.

(2 marks)

COLUMN A	COLUMN B
1. Winter season	a. Eucalyptus and Banyan
2. penguin	b. proboscis
3. common trees	c. pebbles
4. honey bees	d. Dianthus

1. _____ 2. _____ 3. _____ 4. _____

III. State whether the following statements are True or False

(2 marks)

1. Van Mahotsava is a programme of planting trees. _____
2. Flowers like daffodil, tulip and calliopsis bloom during summer season. _____
3. Kingfisher makes its nest on the banks of a river. _____
4. Flowers produce a sweet liquid called nectar. _____

IV. Circle the odd one out.

(2 marks)

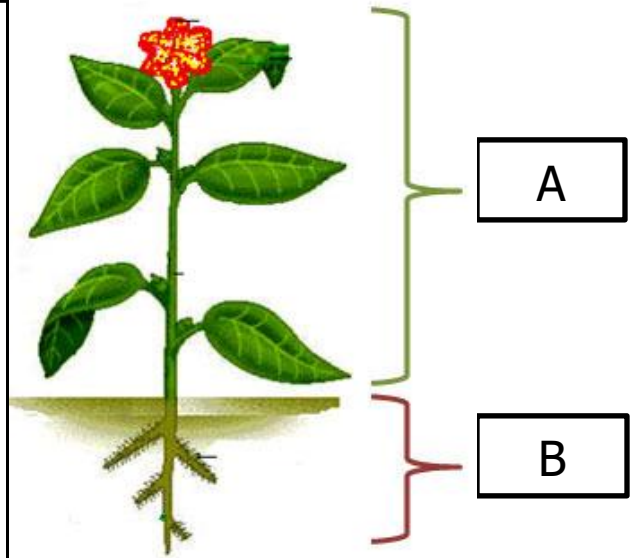
1. branches roots buds leaves
2. pine moss marigold fern
3. penguin tailor bird sparrow cuckoo
4. dog cat rabbit goat

SECTION – B

VI. Observe the given pictures and answer the questions that follow. (4 marks)

Q.1. i) Identify the part labelled as A.

ii) Describe any two functions of part B.



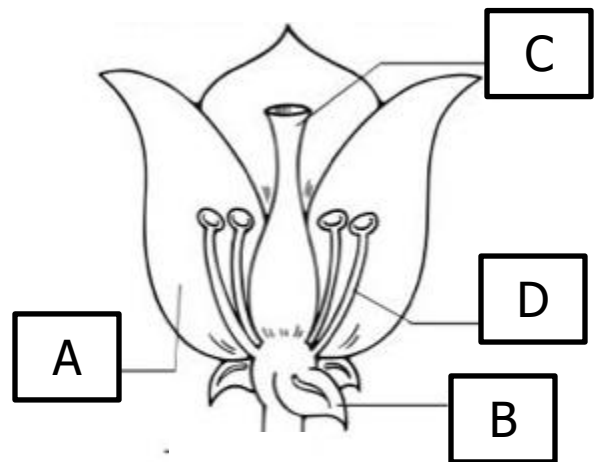
Q.2. (i) Identify the animal.

(ii) Why does it carry a shell on its back?



Q.3. (i) Identify the parts labelled as **C** and **D** in the picture given alongside?

(ii) Write any 2 uses of flowers.



Q.4. (i) Identify the type of honeybee given alongside?

(ii) How does the plant getting benefitted from this animal?



SECTION – C

V. Give reason for the following statements.

(2 marks)

1. A sucker fish attaches itself to the underside of a shark.

2. A woodpecker has a strong and sharp beak.

VI. Answer the following questions.

(4 marks)

1. What are underground modified stems? Give two examples.

2. Differentiate between flowering and non-flowering plants with an example.

Flowering plants	Non-flowering plants

3. Describe the nest of a weaver bird and how it is made.

4. State any two uses of honey.
